



# Information on Production Process by Calling Up Machine Data on PC and Smartphone

## Situation:

It is not possible to monitor the production process of each machine directly on site. Frequently, a quick overview about the status of individual machines is required. A short response time to job order peaks as well as to productivity losses or machine breakdowns is vital.

## Solution:

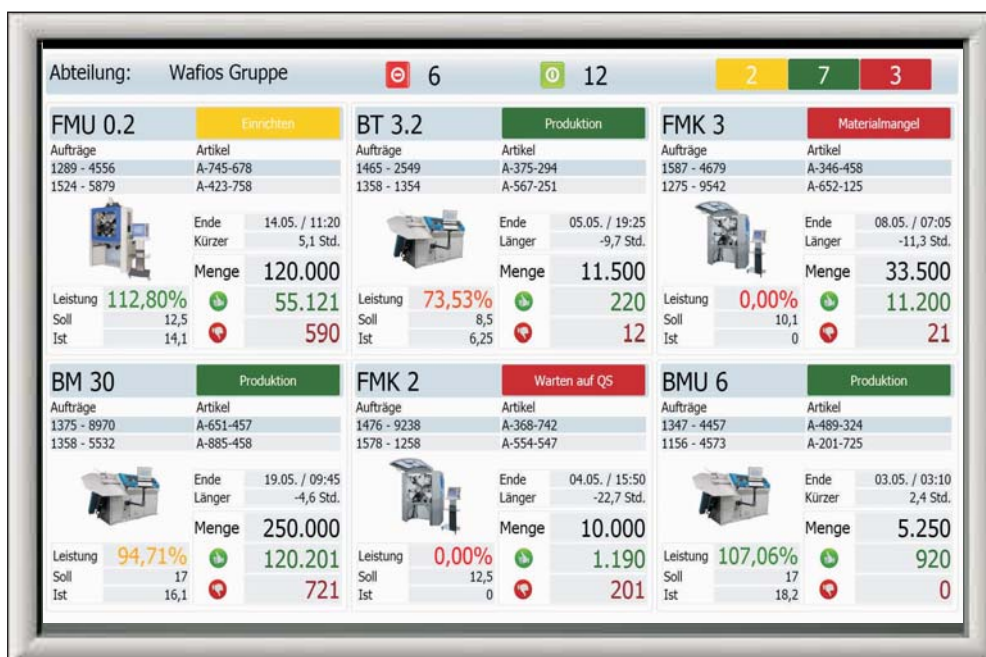
With **iQcockpit** the production data of your machinery can be displayed on your PC or smartphone no matter where you are. The status of the machine, the currently produced workpiece as well as the quantity is displayed via WLAN or UMTS and is compared with the target value. The display shows an overview about the current machine data and enables you to respond quickly to capacity constraints or productivity losses.

## Your benefits:

- **Access to the production data of your machinery via WLAN or UMTS at all times and no matter where you are**
- **Just-in-time information on machine downtimes, the latest production status or free production capacities**
- **Fast identification and elimination of fluctuations in productivity**

## Available machine types (price list position 8555):

- FMU machines with WPS 3
- FMK machines
- FUL machines with WPS 3
- BM machines
- BMU machines
- BT machines
- RBV machines



**WAFIOS Machinery Corp.**  
27 Northeast Industrial Road  
Branford CT, 06405 USA  
Phone: (203) 481-5555

Fax: (203) 481-9854  
sales@wafios.us  
www.wafios.us

**Midwest Technical Center**  
9830 W. 190th Street, Unit D  
Mokena, IL 60448 USA